



www.poltent.pl

VENTO® SIX TENT

MOUNTING KIT



x 1

two stroke
hand pump



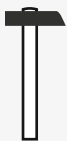
x 6

twisted peg
with ropes



x 30

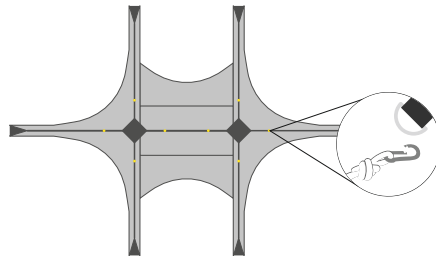
straight peg



x 1

hammer

ASSEMBLY INSTRUCTIONS



1

Spread out flat and clip the ropes to the eyelets using carabiners.



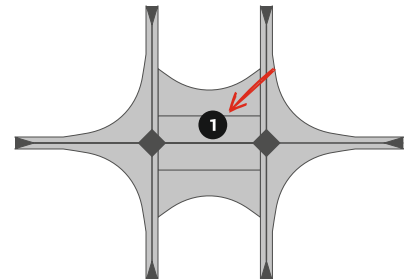
2

Prepare the inlet valves for pumping. The valves are located at the bottom of the tent's leg. Unscrew the first plug.



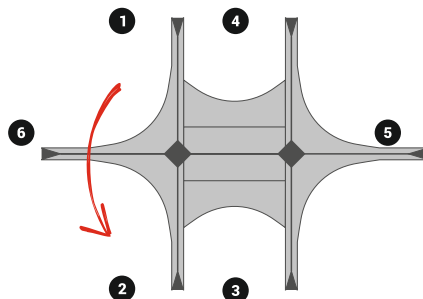
3

Make sure that the safety valves are closed. The valves are located at the top of the tent's leg.



4

Start inflating the tent of the central module.



5

Inflate the legs.



6

After inflating each leg, close the inlet valve.

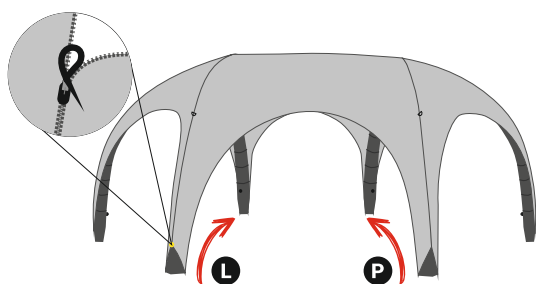




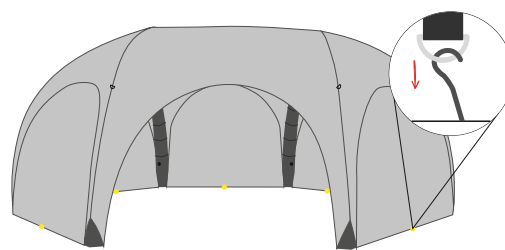
www.poltent.pl

VENTO® SIX TENT

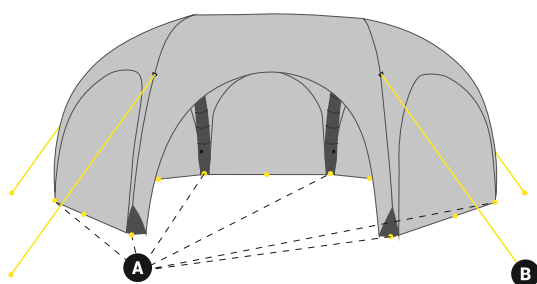
ASSEMBLY INSTRUCTIONS



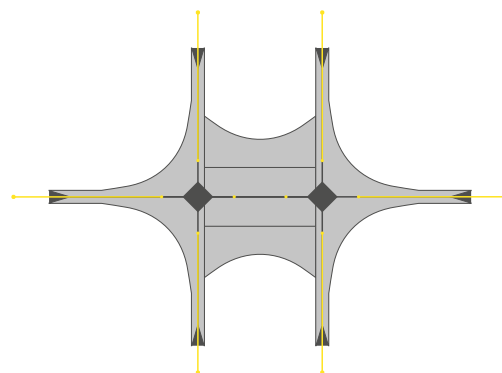
8 After filling all modules (legs) with air, fasten the walls with zippers on the right and left side of the wall.



9 The zipped walls should be attached to the ground with straight pegs.



10a At the end, stabilize the tent. Attach the legs to the ground using straight pegs.



10b Expand the ropes to their full length and fix them to the ground according to the above drawing.

DISASSEMBLY INSTRUCTIONS

1 Unzip the side walls, remove the pegs and ropes. Unscrew the inlet valves in the legs.

2 After releasing the air from the modules (legs), lay the tent cover flat so that the tent legs are arranged in

3 Release the rest of the air by rolling the tent from its top towards the valves.



tel. +48 32 720 65 23 | kontakt@poltent.pl | www.poltent.pl
Os. 1 Maja 16 J | 44-304 Wodzisław Śląski | Poland

#CreateYourBrand