



#CreateYourBrand

## INSTRUCTIONS - Projection screen

1

Place the bag on a level surface before unpacking it.

2

After unpacking the screen, put it on the ground with a loosely laid cover with hook and loop side up.

3

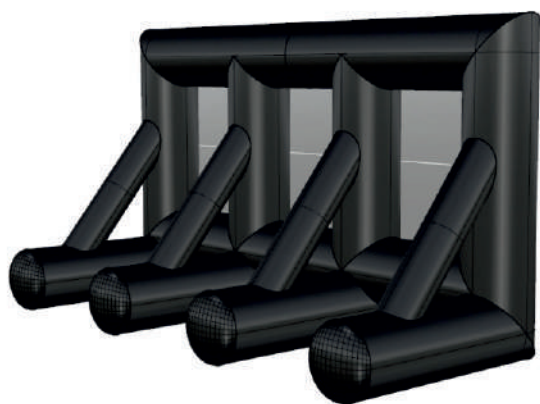
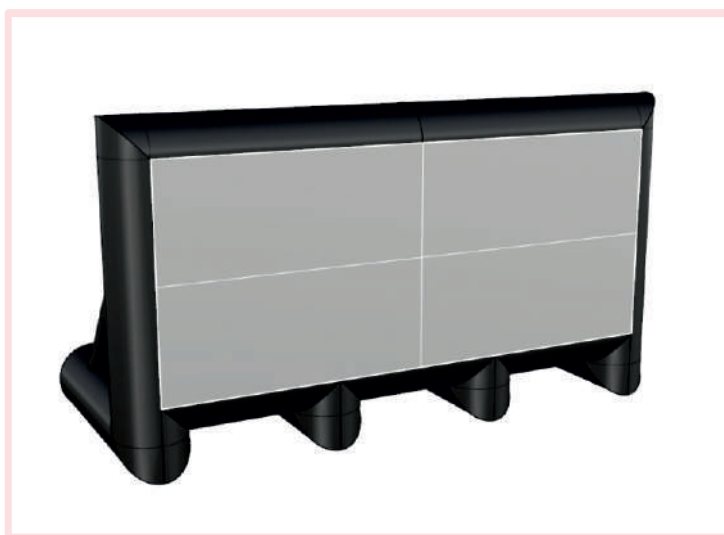
Attach the guy lines to the screen.

4

Put the plug into the socket to start the process of inflation.

5

Be sure not to cover the screen while inflating. Wait a while until the screen fills with air.



6

Using the guy lines, place the inflated screen vertically.

7

After placing the screen, fasten the end of the rope to the ground.

8

Fix the other lines in the same way. Ensure that the screen is stable.

9

The final step is to anchor the screen directly to the ground.

